



KING & COMPANY



90 Waratah Drive Crestmead QLD

3 1 2

Price Adjustment - Act Now!
FIRST HOME BUYERS, RUN! DON'T WALK....

H A L L M A R K S:

- | 603sqm block with pool & huge alfresco area
- | Air-conditioning & pot belly stove
- | Convenient location

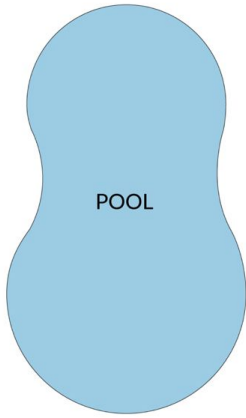
I N S I D E:

- | Tiled, L shape living/ dining area with air-conditioning
- | Tidy kitchen with electric cooking & Dishwasher
- | Master bedroom with air-conditioning and built-in robe
- | 2 other bedrooms are a good size with built-in robes
- | Bathroom with bathtub + separate toilet
- | Laundry with rear access & single garage with internal access

Price : \$ 640,000
Land Size : 600 sqm
View : <https://www.kingcompanypg.com/sale/qld/lo-gan/crestmead/residential/house/8055860>

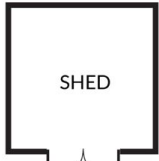


Courtney King
07 3805 2755



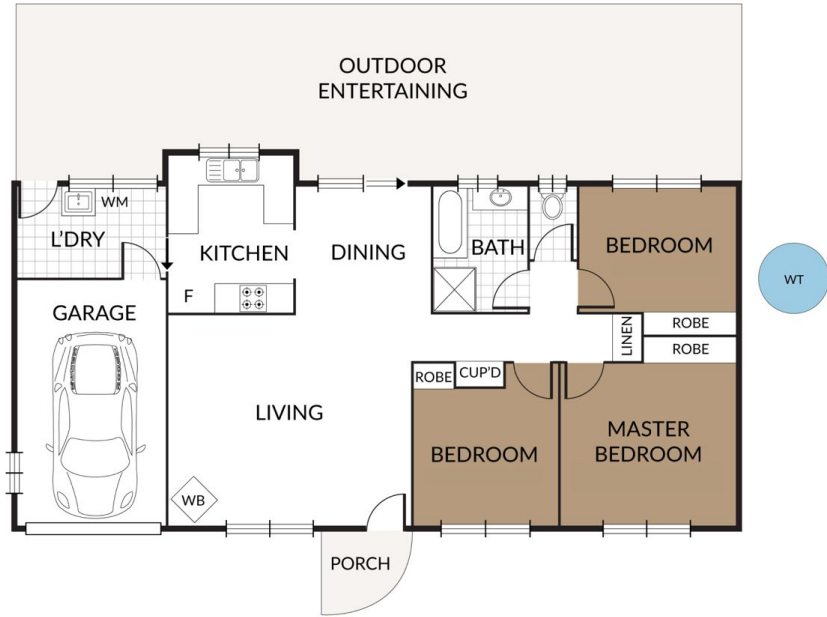
POOL

(NOT IN POSITION)



SHED

(NOT IN POSITION)



3 1 1
bedroom bathroom car/acom

90 Waratah Drive
CRESTMEAD

KING&COMPANY

NOTE: Every precaution has been taken to verify the accuracy of the above details. However, prospective purchasers are advised to make their own enquiries.